

# Chuck Close

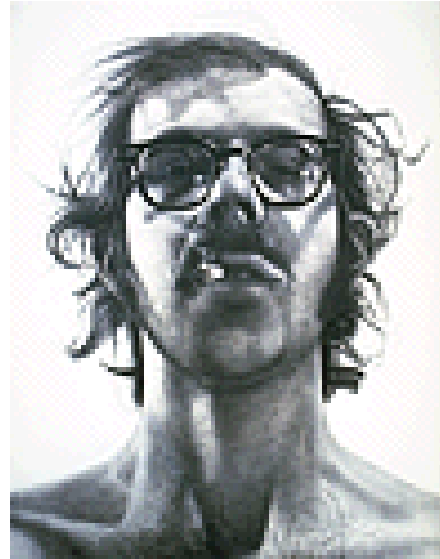
What do you think Chuck Close means when he says his works are "paintings first and portraits second"?

Think about other self-portraits you have seen. You may want to collect or review self-portraits by these artists: Van Gogh, Rembrandt, O'Keeffe, and Kalo. How is Close's painting like or different from these self-portraits? One difference is that Close worked from a photograph while the other artists may have looked in a mirror.

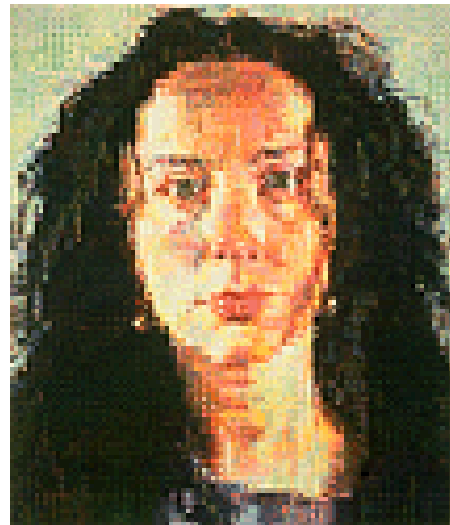
From looking at *Big Self-Portrait*, what do you think about Chuck Close's personality? Why? Do you think Close wanted to tell you about his personality through the *Kiki* painting? Why or why not?

Would you have kept painting after being paralyzed in 1988 if you had been Chuck Close? What made him continue?

Which portrait do you like the best, *Kiki* or *Big Self-Portrait*? Why? What do you think about the cigarette in *Big Self-Portrait*?



Chuck Close, *Big Self-Portrait*



Chuck Close, *Kiki*